

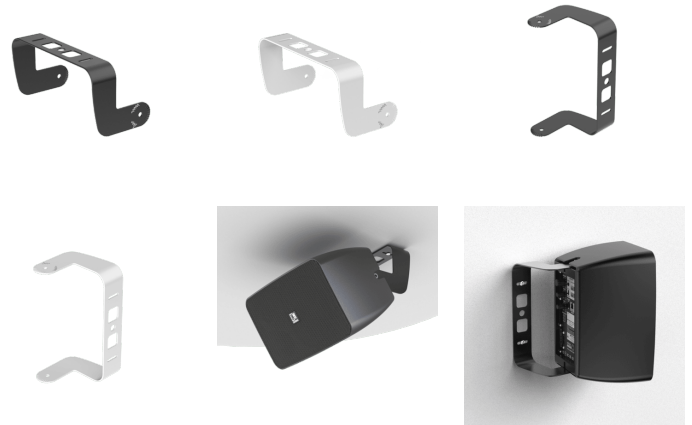
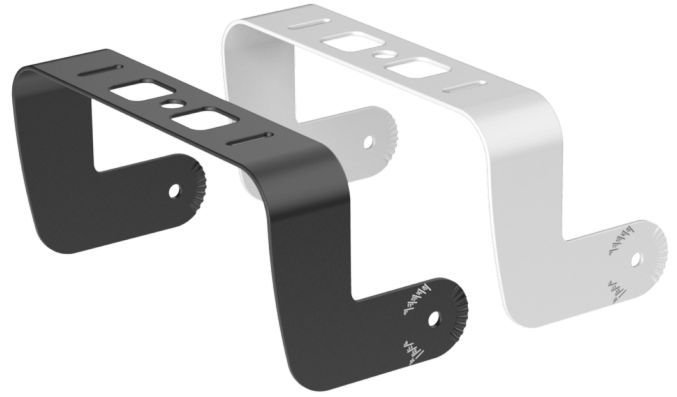
## Highlights:

- For horizontal and vertical placement
- Ceiling mount possibilities

## Product information:

You can rely on the MBK455 angled mounting bracket set\* for an extra inclination of 90° for the ARES5A when needed. This 90° bracket makes it possible to mount the ARES5A set to a smartboard or trolley neatly concealing the bracket away. The MBK455 is also perfectly suited for mounting to various ceiling surfaces.

\*ARES5A not included with the MBK455 bracket system.



## Product Features:

|              |   |
|--------------|---|
| Mounting     | 90° (central position) ± 30° up & 45° down tilt |
| Weight       | 1.014 lb (pair)                                 |
| Construction | Zinc plated steel 2 mm                          |
| Finish       | Structured powder coating                       |
| Colours      | Black (RAL9005) (MBK455/B)                      |
|              | White (RAL9003) (MBK455/W)                      |

## Variants:

---

- MBK455/B - Black version
- MBK455/W - White version